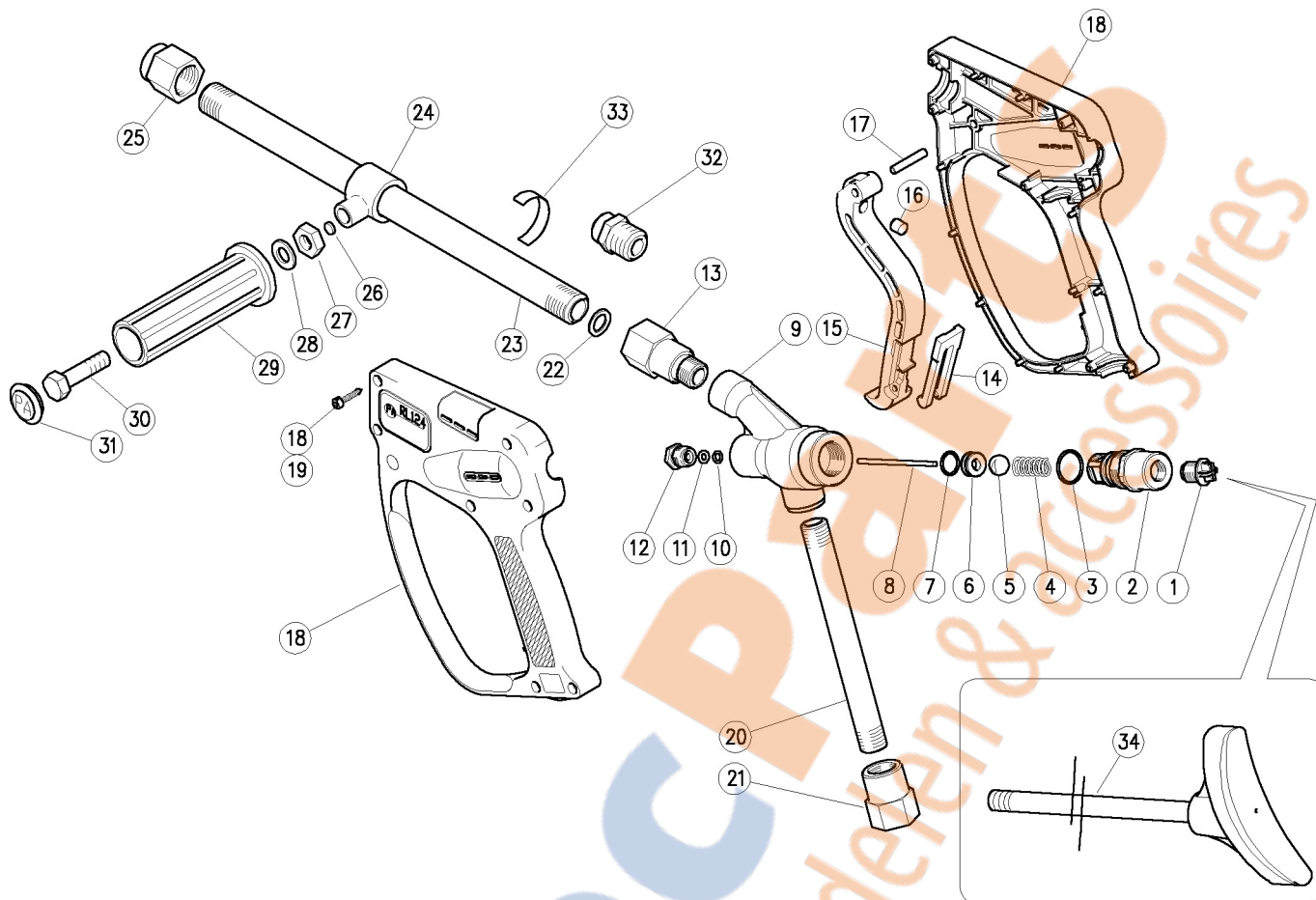


30.4000.40 Extn.RL100-124 400mm z.pl+knob 1/4F Npt
 30.4000.80 Extn.RL100-124 800mm z.pl+knob 1/4F Npt

30.5300.00 RL124 spr.gun 1/2 FF Bsp



Pos.	P/N	Description	Q.ty	K1	K2	K3	K4	
1	30.5815.84R	Plug, 1/4M Bsp DIN259 Plast. black	1					10
2	30.5309.31R	Spring holder, brass	1					5
3	10.3072.01R	O-ring, 1,78x20,35 mm Ni 85	1	•				10
4	30.5304.51R	Spring, 2x29x9,9 mm Sst.	1					5
5	14.7465.00R	Ball, 1/2" Sst.	1	•				5
6	30.5308.51R	Seat, Sst.	1	•				3
7	10.3068.01R	O-ring, 1,78x17,17 mm Ni 85	1	•				10
8	30.5307.51R	Piston, 3x63 mm Sst.	1	•				3
9	30.5305.35R	Housing -RL124, brass	1					1
10	10.3165.00R	O-ring, 2,62x2,84 mm Vi 70	1	•				10
11	10.4018.00R	Back-up ring, 3,2x7,5x1,2 mm	1	•				10
12	30.4115.31R	Front Plug, M10x1 brass	1					10
13	30.5306.51R	Coupling, 1/2 Bsp Sst.	1					3
14	30.1510.84R	Safety latch, PA red	1					10
15	30.5303.84R	Trigger, black	1					5
16	30.0675.51R	Stop pin, 8x7,1mm Sst.	1					10
17	30.2517.31R	Parallel pin, 5x27,5 mm brass	1					10
18	30.5312.24	Casing kit -RL 124 + screws	1					1

Pos.	P/N	Description	Q.ty	K1	K2	K3	K4	
19	16.3075.51R	S/tapping scr. 3,5x18 mm sst.	7					10
20	30.5104.56R	Tube, M18x1,5 138,5 mm Sst.	1					5
21	30.5107.51R	Coupl., M18x1,5F-1/2F Bsp Sst.	1					3
22	14.3802.00R	Washer, 12x18x1,5 mm Cu **	2					10
23	30.4020.619	Tube, 1/2Bsp MM 400mm z.pl. (1) **	1					1
23	30.4022.619	Tube, 1/2Bsp MM 800mm z.pl. (2) **	1					1
24	30.5017.35R	Tube fastener, 1/2" Bsp	1	•				5
25	30.4021.61R	Nozzle holder, 1/2F Bsp-1/4F Npt z.pl.	1					3
26	13.5305.00R	Plate, 8x1,5 mm Cu	2	•				10
27	11.4627.00R	Hex. nut, M10	1	•	•			10
28	14.3799.00R	Washer, 10x21x2 mm	1	•	•			10
29	41.0409.84R	Knob, 32x115 mm PP black	1	•	•			5
30	16.2035.00R	Screw, DIN933 M10x35 mm z.pl.	1	•	•			10
31	41.0411.84R	Plug, Knob PP black	1	•	•			5
32	30.5018.61R	Nzl.holder, RL100-RL124 1/2M Bsp **	1					1
33	15.3810.00	Label "13,5MPa Tubo znc- PA"	1					1
34	30.5060.00	Shoulder rest -RL600 1/4M Bsp 300mm **	1					1

** On request

Kit	P/N	Description	
K1	30.5314.24	Spares kit -RL124, 7x1pcs.	1
K2	30.5038.24	Spares kit -Lance knob	1
K3	30.4019.24	Knob-kit, M10x35	5

(1) 30.4000.40 (2) 30.4000.80